

Una

South West Residence
Levels 05-16 Unit 03

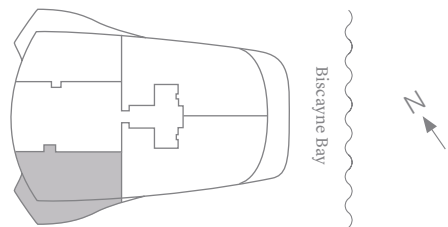
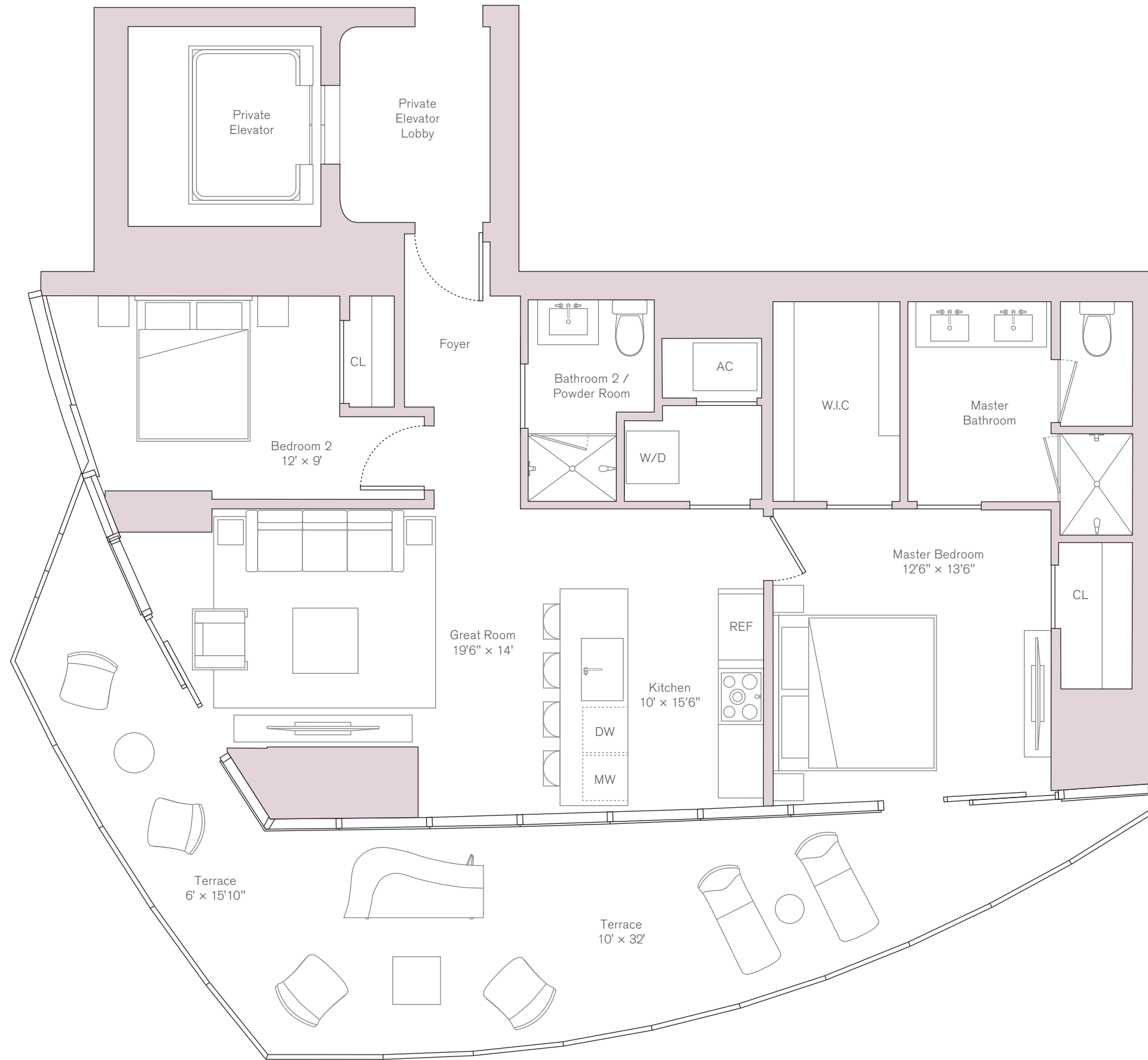
INTERIOR
1,179 SQ FT / 110 SQ M

EXTERIOR
404 SQ FT / 38 SQ M

TOTAL
1,583 SQ FT / 147 SQ M

FEATURES
2 Bedrooms
2 Bathrooms

Units on Level 15-16
Interior: 1,215 SQ FT / 112.8 SQ M
Exterior: 416 SQ FT / 38.6 SQ M



unaresidences.com

OKO GROUP

Cain International

FORTUNE DEVELOPMENT SALES

ORAL REPRESENTATIONS CANNOT BE RELIED UPON AS CORRECTLY STATING THE REPRESENTATIONS OF THE DEVELOPER. FOR CORRECT REPRESENTATIONS, MAKE REFERENCE TO THIS BROCHURE AND TO THE DOCUMENTS REQUIRED BY SECTION 718.503, FLORIDA STATUTES, TO BE FURNISHED BY A DEVELOPER TO A BUYER OR LESSEE. Ceiling heights are measured from top of slab to top of slab. As a result, actual clearance between the top of the finished floor coverings and the underside of the finished ceiling, drop ceiling or soffits will be less. All ceiling heights are approximate and subject to change. All depictions of furniture, appliances, counters, soffits, floor coverings and other matters of detail, including, without limitation, items of finish and decoration, are conceptual only and are not necessarily included in each Unit. Furnishings are only included if and to the extent provided in your purchase agreement. Stated square footages and dimensions are measured to the exterior boundaries of the exterior walls and the centerline of interior demising walls and in fact vary from the square footage and dimensions that would be determined by using the description and definition of the "Unit" set forth in the Declaration (which generally only includes the interior airspace between the perimeter walls and excludes all interior structural components and other common elements). This method is generally used in sales materials and is provided to allow a prospective buyer to compare the Units with units in other condominium projects that utilize the same method. Measurements of rooms set forth on this floor plan are generally taken at the farthest points of each given room (as if the room were a perfect rectangle), without regard for any cutouts or variations. Accordingly, the area of the actual room will typically be smaller than the product obtained by multiplying the stated length and width. All dimensions are estimates which will vary with actual construction, and all floor plans, specifications and other development plans are subject to change and will not necessarily accurately reflect the final plans and specifications for the development. All depictions of appliances, counters, soffits, floor coverings and other matters of detail, including, without limitation, items of finish and decoration, are conceptual only and are not necessarily included in each Unit.